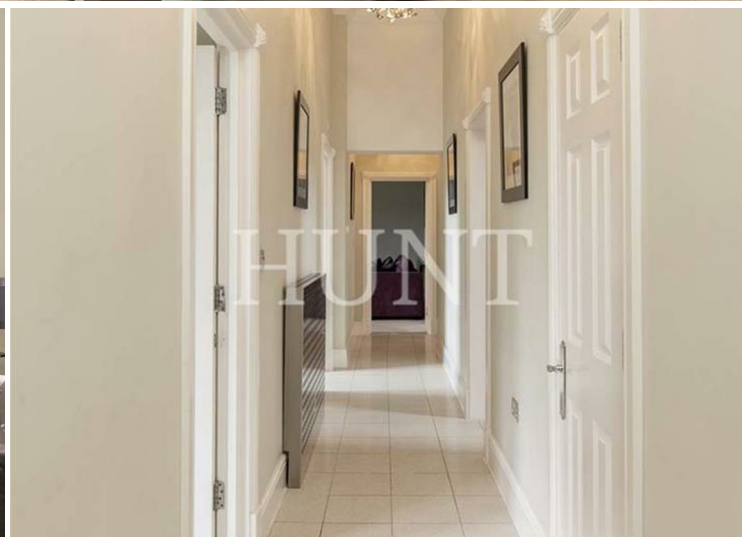


SUTHERLAND HOUSE | REPTON PARK | WOODFORD GREEN | IG8



**HUNT**  
Property Services Ltd





## DESCRIPTION

Immaculate first floor two double bedroom, two bathroom apartment set within the prestigious gated development of Repton Park. This perfectly positioned apartment offers spacious bright accommodation with the most glorious views over the open grounds and forest. High ceilings and sash windows and cast iron radiators, set in the period building.



## SUMMARY

- FIRST FLOOR APARTMENT
- TWO DOUBLE BEDROOMS, TWO BATHROOMS
- ABUNDANCE OF NATURAL LIGHT
- SPACIOUS LOUNGE WITH VIEWS
- TWO PARKING SPACES
- 24 HOUR CONCIERGE, NIGHT TIME SECURITY
- 145 ACRES OF MATURE PARKLAND
- VIRGIN ACTIVE SPA & GYM
- SERVICE CHARGE £3084.90 PA, GROUND RENT £125 PA
- SOLE AGENT. CHAIN FREE

Asking Price £625,000



---

SUTHERLAND HOUSE | REPTON PARK | WOODFORD GREEN | IG8

HUNT

Hunt Property Services Ltd  
732 Chigwell Road  
Woodford Green  
Essex IG8 8AL

020 85027667/07719987904  
info@huntpropertyservices.co.uk

**HUNT**  
Property Services Ltd

